

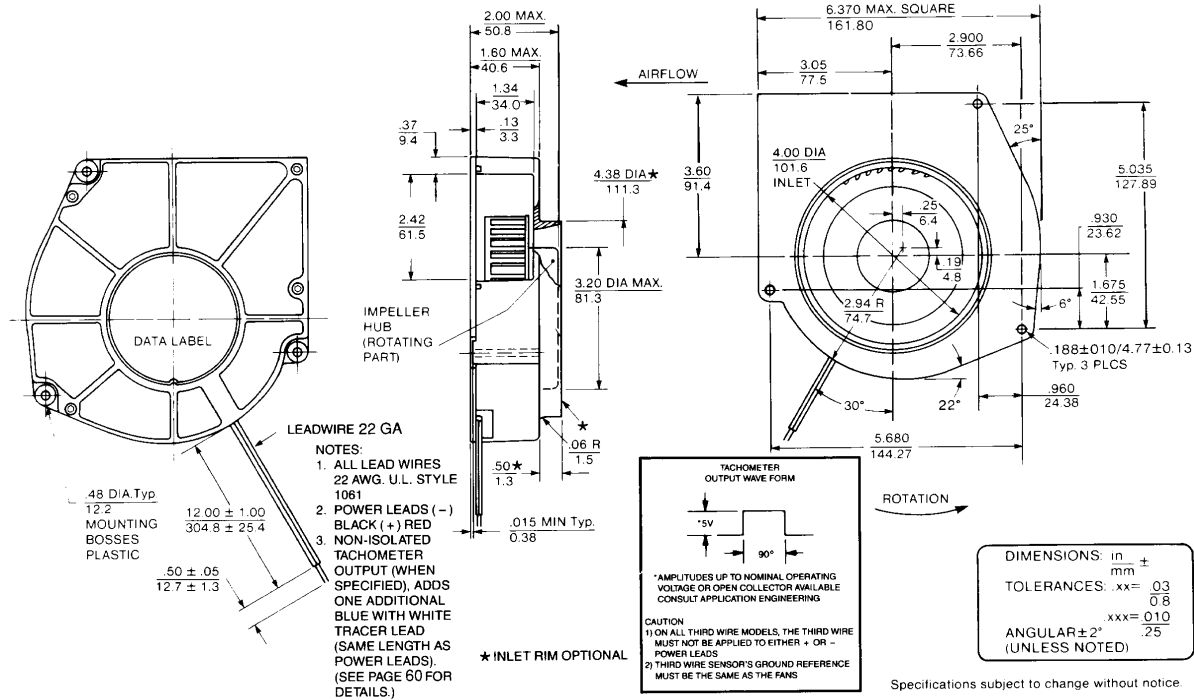
# SPECIFICATIONS

**Model Number:** SPD24B1QDN  
**Part Number:** 19032364A

**Ver:01**  
**Jan. 18, 2018**



## Mechanical Drawing:



## Specifications:

Nominal Voltage	= 24 vdc
Operating Voltage Range	= 12 - 28 vdc
Nominal Running Current	= 1.250 amps
Locked Rotor Current	= 2.000 amps
Running Power	= 30.0 watts
Average Speed	= 2500 rpm
Bearings	= Ball
Air Flow	= 59 CFM
Acoustic	= 57.0 dBA

## Construction:

Backplate: Die-Cast Zinc Alloy  
 Housing & Propeller: Plastic, Black, UL 94V-0

## Life Expectancy:

This fan is designed for continuous duty life of 62,000 hours at 50°C.

## Agency Approvals:

UL, CE

## Features:

Polarity Protected  
 Brushless DC Motor Design  
 Electronic Locked Rotor Protection  
 Automatic Restart Capability  
 Operating Temperature: -10°C to 70°C  
 Storage Temperature: -40°C to 85°C

## Fan Performance Sensor:

Output:	Open Collector
Ic	20mA mzx
Vcc	28 vdc max
Logic:	High on pass/Low on fail
Delay:	10 sec +/- 4
Latching:	No

## Termination:

12" Lead wires, 22 AWG, UL 1061  
 Fan power - Red  
 Fan ground - Black  
 FPS power - Red/White  
 FPS ground - Black/White  
 FPS signal - Blue/White

**PQ Curve:**

